

Contrabassoon

Anima

Dan Byron

A $\text{♩} = 142$ **B** **C**

8 8 11

28

Voc

Ste - le-mi cad în cap iar eu mă tre - zesc Po - ves - tind cu ier - bi vo re

32

D

mf

41

E **F**

49

G **H**

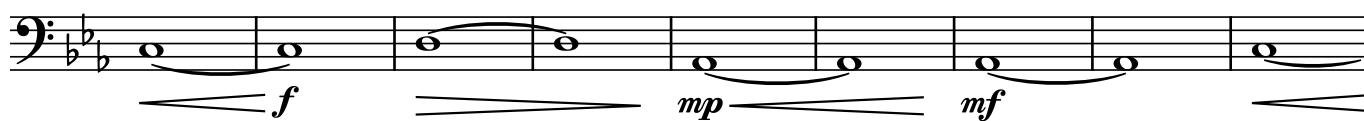
Cl 1 8va

70

H

mp *mf*

77



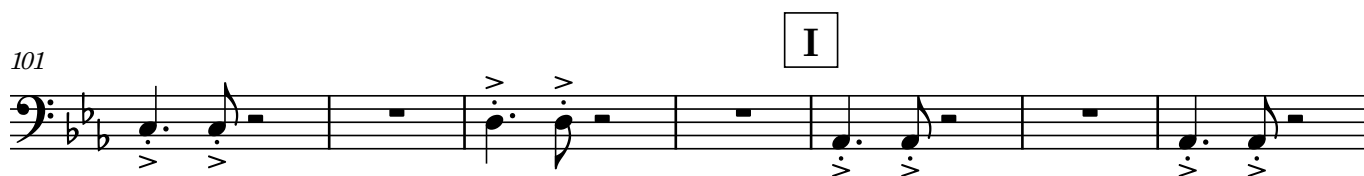
86



94



101



108



115



121 **J** **6** **K**

mf *ff*

132 **L**

139

146

153 **M**

160 **N**

164

167

170 **Larghetto** ♩ = 60

p *f* *mp*